



# EDUCATION/ LEARNING



SMARTLINK®  
p.182



MOTIVATE®  
TABLES AND  
SEATING  
p.188



ACCOMPLISH®  
p.192



ENABLE®  
p.192



PROFICIENCY®  
p.192



HUDDLE  
p.194



ACTIVITY TABLES  
p.196



CAFETERIA  
TABLES  
p.196

# HON EDUCATION/LEARNING

What do 21st century learning environments need?



FLAGSHIP®  
LATERAL FILES  
p.148



BRIGADE®  
PEDESTALS  
p.152



SMARTLINK®  
COLLECTION  
p.182



SMARTLINK®  
COLLECTION  
p.182



SMARTLINK®  
COLLECTION  
p.182



SMARTLINK®  
SEATING  
p.186



MOTIVATE®  
SEATING  
p.188



ENABLE®  
DESKING  
p.192



PROFICIENCY®  
DESKING  
p.192



ACCOMPLISH®  
DESKING  
p.192

## CLASSROOM

We have bright ideas for learning, teaching, and storage with flexible and durable product choices.



PRESIDE®  
p.162



SMARTLINK®  
COLLECTION  
p.182

## FLEXIBILITY



**Nesting/Stacking**  
Do you anticipate a need for furniture that can be stored efficiently when not in use?

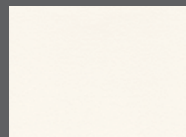


**Height Adjustability**  
Will the same desks or tables need to accommodate students in a wide range of sizes?

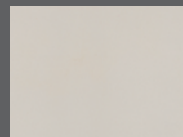


**Reconfigure**  
Could easy reconfiguration help support a wider variety of teaching and learning styles?

## FINISHES



**High-Pressure Laminate**  
Is value your key driver for purchasing decisions—as long as furniture still resists moisture, peeling, and chipping?



**Hard Plastic**  
Does your environment dish out more intensive wear and tear, requiring materials that resist defacing?



**Shell Chair Color**  
Are you interested in creating a vibrant learning environment with vivid hues—or something more subtle?



10500 SERIES™  
DESKING  
p.32



METRO DESKING  
p.58



IGNITION®  
SEATING  
p.96



FLAGSHIP®  
LATERAL FILES  
p.148

## ADMINISTRATIVE

Teacher stations, desking, and seating support educators and administrators, from classroom to lounge to office.



SMARTLINK®  
COLLECTION  
p.182



MOTIVATE®  
SEATING  
p.188

## COLLABORATIVE

HON products help everyone learn together and share, while keeping ongoing projects organized.



HUDDLE  
p.194



CAFETERIA TABLES  
p.196

## ADDITIONAL APPLICATIONS



**Cafeteria**  
Could your cafeteria benefit from tables with spill-resistant tops and heavy-duty, locking casters?



**Lounge**  
Have you considered guest chairs, lounge seating, and tables to add comfort and functionality for teachers lounges, libraries, or common spaces?



**Administration**  
Do you also need desking, storage, and seating for school offices?



**Collaborative**  
Do you need to provide casual furniture for the library or other common areas where students work together?



**Training**  
Would it be practical to have some spaces that function more like training environments than classrooms?



**Multi-purpose**  
Do you expect to need flex spaces that can accommodate multiple subjects during the day and perhaps meetings in the evening?

# SMARTLINK® COLLECTION



SmartLink® teacher station and storage in Reflection top and base, Charcoal metal surface color, and Platinum frame. Ignition® task chair in Attire Onyx.



SmartLink® teacher station and storage with Reflection top and Platinum frame. Student chairs in Lime and Tangelo shells and Platinum frames. Student desks with hard plastic tops in Sand and Platinum frames.

## Bright ideas for today's learning environments

- The SmartLink® system consists of four components that work together to create stimulating learning environments.
- Teacher stations accommodate technology, while offering plenty of legroom and storage.
- Student desks can be arranged in multiple configurations to support various teaching and learning styles.
- Modular storage cabinets use interchangeable shelves and trays to keep up with changing storage needs.
- The wall rail system features three layers of sliding whiteboards that expand your teaching surface.



SmartLink® standing-height desks with White hard plastic tops and Charcoal frames. Stools in Regatta shells and Black frames. Student chairs in Regatta shells with Textured Charcoal frames. Wall rail system in Platinum with Lucy Neutra tackboards.



See page 10

GO ONLINE FOR MORE SMARTLINK®!  
[hon.com/smartlink](http://hon.com/smartlink)



SmartLink® teacher station with Reflection top, Charcoal metal surface, Platinum Metallic frame. SmartLink® student desks with Sand tops and Charcoal legs. SmartLink® 4-leg chairs and task chair in Tangelo with Textured Charcoal frames.

# SMARTLINK® COLLECTION



SmartLink® tray storage kits are interchangeable between teacher stations and modular storage.



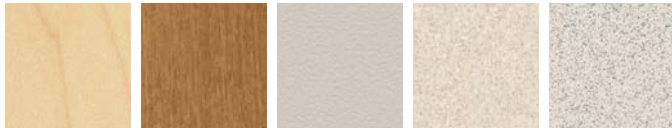
SmartLink® teacher stations are available with multiple storage options.



Sliding whiteboards are also reversible; specify a tackboard for one side.

## SURFACE MATERIALS

### Hard Plastic Student Desk Tops



**DD** Natural Maple   **CC** Harvest   **G9** Breeze   **G8** Sand   **G1** White

### Laminate Student Desk Tops



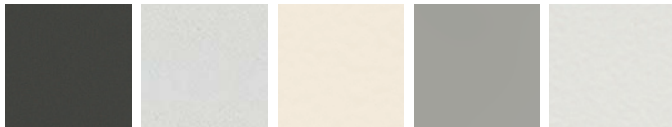
**DD** Natural Maple   **CC** Harvest   **T3** Muslin   **Q** Light Gray   **T6** Reflection   **A5** Sheer Mesh   **B9** Silver Mesh

### Top and Base Colors (Teacher Station, Storage)



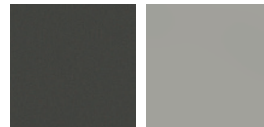
**DD** Natural Maple   **CC** Harvest   **T3** Muslin   **Q** Light Gray   **T6** Reflection   **A5** Sheer Mesh   **B9** Silver Mesh

### Paint Finishes



**S** Charcoal   **Q** Light Gray   **T3** Muslin   **T1** Platinum   **T6** Reflection

### T-Mold (Teacher Station, Storage)



**S** Charcoal   **T1** Platinum Metallic

### Tackboard Fabrics



**GN13** Element Veil   **GN13** Element Warm Beige   **LC24** Lucy Neutra

PRODUCT LINE HIGHLIGHTS

Student Desks



Hard Plastic or Laminate Top Adjustable-Height Student Desk  
\$546 - \$609 (2/carton)

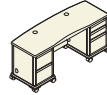


Hard Plastic or Laminate Top Fixed-Height Student Desk  
\$546 - \$609 (2/carton)



Hard Plastic or Laminate Top Sit-to-Stand Student Desk  
\$803 - \$866 (2/carton)

Teacher Stations



Teacher Station  
\$1,640 - \$2,105

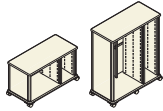


Teacher Station  
\$1,405 - \$1,870

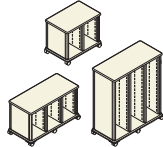


(1) 30" Column  
\$836 - \$1,368

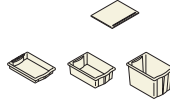
Modular Storage (continued)



(1) 30  
(1) 12 Columns  
\$1,075 - \$2,216



(2) 12" Columns  
(3) 12" Columns  
\$924 - \$2,410

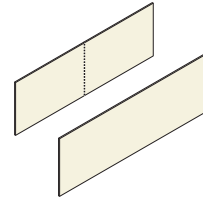


Shelf and Tray Kits  
\$82 - \$341

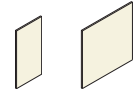
Wall Rail System



Rails and Worksurface  
\$352 - \$641



Learning Board, Fixed Whiteboard  
\$1,537



Learning Board, Sliding Whiteboard or Tackboard  
\$471 - \$770

THE PERFECT LEARNING ENVIRONMENT STARTS WITH FLEXIBILITY.



The innovative shape of SmartLink® student desks lends itself to any collaborative configuration.



With a simple turn, desks can support either right- or left-handed students.



Cluster four desks to enhance lessons through small-group interaction.





# SMARTLINK® SEATING



SmartLink® teacher station and storage with Reflection top and Platinum frame. Student chairs and task swivel in Tangelo and Lime shells and platinum frames. Student desks with hard plastic tops in Sand and Platinum frames.



SmartLink® standing-height desks with White hard plastic tops and Charcoal frames. Stools in Regatta shells and Black frames.

## The chair most likely to succeed

- Turn around, sit sideways, lean back—the flexible Learning Curve™ design supports all the ways students move.
- 4-leg chairs with casters or glides are available in multiple heights to fit students of any grade level or size.
- Lightweight one-piece shell with built-in handle makes it easy to reconfigure a classroom at a moment's notice.
- Coordinates with student desks and other elements of the SmartLink® education system.

## SHELL/FRAME FINISHES

### Shell Colors



**RG** Tangleo    **CR** Cherry    **LM** Lime    **CP** Calypso    **BU** Surf    **RE** Regatta



**MB** Mulberry    **LOFT** Loft    **K** Platinum    **SHDW** Shadow    **LA** Lava    **ON** Onyx

### Frame Colors



**PLAT** Textured Platinum    **P7A** Textured Charcoal    **Y** Chrome


**GO ONLINE FOR MORE SMARTLINK®!**  
[hon.com/smartlink](http://hon.com/smartlink)


## PRODUCT LINE HIGHLIGHTS

### Chairs



**4-Leg Chair with Glides**  
12", 14", 16", 18"  
\$467 - \$492 (4/carton)



**4-Leg Chair with Casters**  
16", 18"  
\$684 (4/carton)

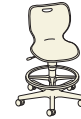


**NEW**  
**Cantilever Chair**  
\$693 - \$791 (4/carton)



**Task Swivel**  
\$231

### Stool



**Task Swivel Stool**  
\$312

### Accessories



**Wire Basket**  
\$96



# MOTIVATE®



Motivate® task chair in Snap Primary upholstery, ilira-stretch back in Fog, frame and base in Black. Motivate® tables in Brilliant White tops and edge; modesty panels in Platinum Metallic.



Motivate® adjustable-height tables in Harvest laminate and Platinum Metallic base paint. Presentation cart w/modesty panel and mobile markerboard in Platinum Metallic. Motivate® flex-back task chairs and stool in Messenger Lumine upholstery and Black frame.

## Active furniture for collaborative learning

- Coordinating seating, tables, and presentation tools that work in any learning environment.
- Choose chairs that stack, nest, or swivel; stools and tablet armchairs available, too.
- Nesting tables of various shapes fit neatly together and can be stored away when not in use.
- Mobile markerboards and presentation carts support active teaching styles.



Motivate® 4-leg chair with tablet arm in Lime shell, Platinum Metallic frame and Natural Maple tablet arm.

**SCScertified™**  
INDOOR AIR QUALITY



See page 10  
Tables SCS only  
Seating Level only

GO ONLINE FOR MORE MOTIVATE®!  
[hon.com/motivate](http://hon.com/motivate)



Motivate® 4-leg stacking chair in Regatta shell and Platinum Metallic frame. Motivate® tables in Harvest with Harvest 2mm edge, base, and modesty panel in Platinum Metallic.

EDUCATION/  
LEARNING

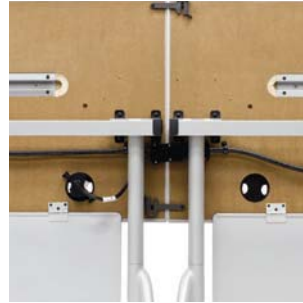
# MOTIVATE®



Flexible chair back technology intuitively provides balance and lumbar support.



In-line nesting base option makes Motivate® tables easy to store when not in use.



Modular power provides a pluggable non-sequential technology solution.



Optional flip-top ports put power access right into tabletops.

## SURFACE MATERIALS

### TABLE LAMINATES

#### Core Laminates



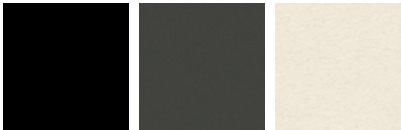
**D** Natural Maple   **C** Harvest   **H** Bourbon Cherry   **J** Henna Cherry   **F** Shaker Cherry   **Z** Columbian Walnut   **N** Mahogany

#### Woodgrain Laminate



**HART** Harbor Teak

#### Solid Laminates



**P** Black   **S** Charcoal   **K4** Whitestone

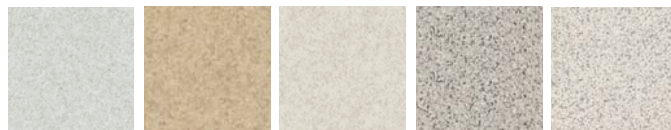
#### Patterned Laminates



**A7** Carbon Mesh   **B9** Silver Mesh   **A5** Sheer Mesh   **A9** Steel Mesh   **A8** Taupe Mesh   **K9** Canyon Zephyr



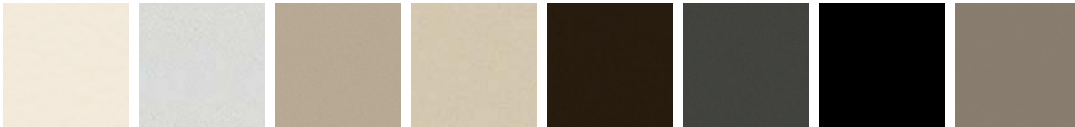
**WHIT** Brilliant White   **SHDW** Shadow



**K7** Cloud Zephyr   **K8** Desert Zephyr   **K1** Shadow Zephyr   **G2** Gray   **G1** White

### TABLE BASE COLORS

#### Core Paints



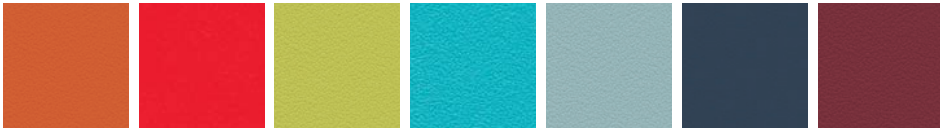
**T3** Muslin   **Q** Light Gray   **T5** Greige   **L** Putty   **T8** Carob   **S** Charcoal   **P** Black

#### Choice/Metallic Paints



**SHDW** Shadow   **T4** Champagne Metallic   **T1** Platinum Metallic

### CHAIR SHELL COLORS



**RG** Tangelo   **CR** Cherry   **LM** Lime   **CP** Calypso   **BU** Surf   **RE** Regatta   **MB** Mulberry

### CHAIR BASE COLORS



**BLCK** Textured Black   **PLAT** Textured Platinum Metallic   **Y** Chrome (Available on HMS models only)



**LOFT** Loft   **K** Platinum   **SHDW** Shadow   **LA** Lava   **ON** Onyx   **WHIT** White

PRODUCT LINE HIGHLIGHTS

Seating



**Task, Flex-Back, Upholstered, or ilira®-stretch back, w/ or w/out Arms**  
\$425 - \$922



**Stool, Flex-Back, Adjustable Footring, w/ or w/out Arms**  
\$407 - \$894



**High-Density Stacker, Sled-Leg Base, w/Arms w/ Plastic or Upholstered Seat**  
\$704 - \$1,581 (4/carton)



**4-Leg Stacking, w/ or w/ out Arms w/ Plastic or Upholstered Seat**  
\$477 - \$1,014 (2/carton)



**Nesting/Stacking, Flex-Back, w/ or w/out Arms, Plastic or Upholstered Seat**  
\$374 - \$784



**4-Leg Café-Height Stool w/ Plastic or Upholstered Seat**  
\$311 - \$634

Tables



**Rectangular Fixed-Base Tables**  
\$713 - \$1,130



**Rectangular Nesting Tables**  
\$955 - \$1,388



**Half-Round Fixed-Base Tables**  
\$763 - \$1,058



**Half-Round Nesting Tables**  
\$1,005 - \$1,367



**Trapezoid Fixed-Base Tables**  
\$779 - \$1,070



**Trapezoid Nesting Tables**  
\$1,021 - \$1,328



**Rectangular Adjustable-Height Tables**  
\$955 - \$1,388

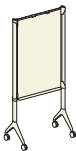


**Rectangular Folding Tables**  
\$1,130 - \$1,575

Accessories



**Presentation Cart, Concave Front, Seated or Standing Height, Adjustable Leg**  
\$999 - \$1,220



**Mobile Markerboard**  
\$1,197 - \$1,232



**Presentation Cart Desktop Lectern**  
\$273 - \$293



**Presentation Cart Storage Shelves**  
\$72 - \$251



**Ganging Hardware**  
\$79

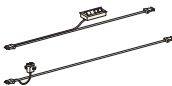


**Table Modesty Panel**  
\$151 - \$233

Electrical/Power



**IQ Interlink Power Base In-Feed**  
\$428



**IQ Interlink Power Harness**  
\$137 - \$303



**Wire Trough**  
\$54

MOTIVATE® PRODUCT OVERVIEW



Nesting



Stacker



Task Seating



Table



Presentation Cart

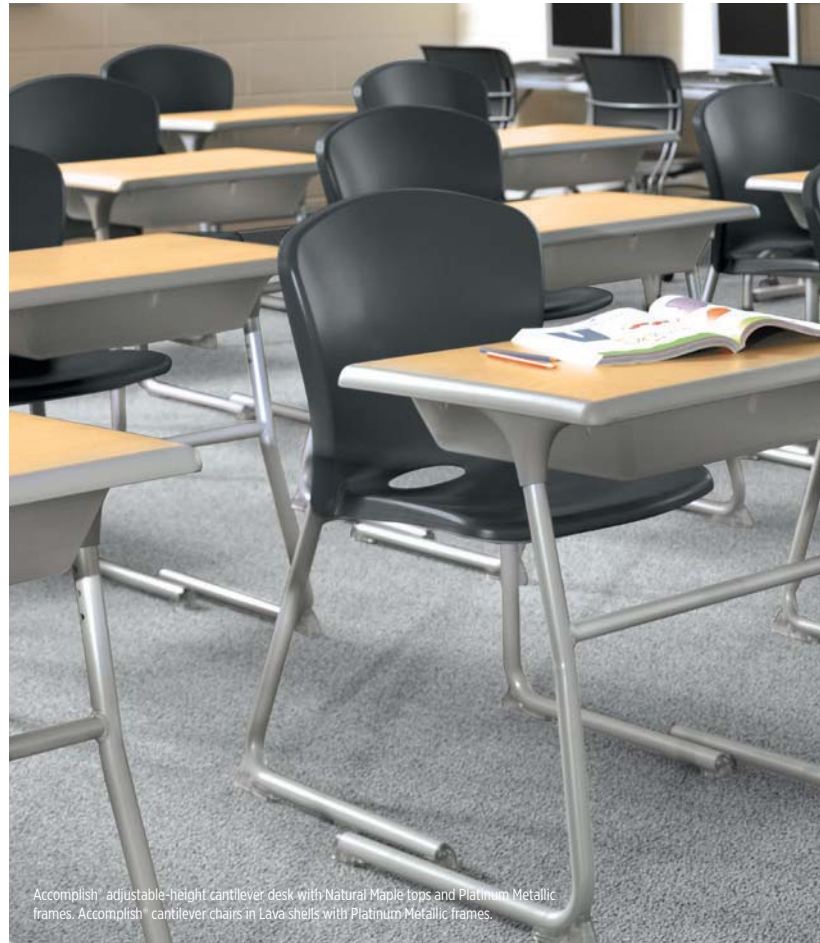


Markerboard

# STUDENT DESKS & CHAIRS



Accomplish® single-entry combo desk in Natural Maple laminate, Regatta shell, and Platinum Metallic frame.



Accomplish® adjustable-height cantilever desk with Natural Maple tops and Platinum Metallic frames. Accomplish® cantilever chairs in Lava shells with Platinum Metallic frames.

## Student achievement starts right here

- The Accomplish® dual-entry desk (HCL71HPB) combines seating and worksurface in one.
- Enable® student desks (HE4A-1824L) have tubular steel frames and scratch-resistant tops for a clean design.
- Proficiency® student chairs (HH1018) feature a contoured shell for comfort and integral handles for easy transport.
- Proficiency® height-adjustable student desks (CL4DMPB) offer easy-care laminate tops and high-strength steel frames.



See page 10

## ACCOMPLISH®



**HCL71HPB Dual-Entry Combo**  
Desk in Harvest laminate top, Mulberry seat, and Platinum Metallic frame  
\$454 each



**HCL4DHPB 4-Leg Desk**  
Shown in White/Platinum Metallic  
\$556 (2/carton)



**HCL418 4-Leg Chair**  
Shown in Regatta  
\$640 - \$696 (4/carton)



**HCLTKPA Swivel Chair**  
Shown in Lava  
\$296



**HCLTSTPA Task Stool**  
Shown in Cherry  
\$432

## ENABLE®



**HE4A-1824L Desk**  
Shown in White laminate, Black edge, and Platinum frame  
\$140.50 - \$188.50 each

**HH1018 Proficiency® Chair**  
Shown in Regatta and Platinum frame  
\$64.25 - \$86.50 each



**HE4A-2026M w/HEA-UBBP 4-Leg Desk w/Storage Box**  
Shown in Harvest top/Black frame  
\$377 (2/carton)

## PROFICIENCY®



**CL4DMPB Desk**  
Shown in Natural Maple with Platinum frame  
\$233 each

**HCLA50 Under Desk Top Book Basket**  
Shown in Chrome  
\$43.75 each

**HH1018 Shell Chair**  
Shown in Mulberry  
\$64.25 - \$86.50 each



**HCL4DMPB 4-Leg Desk**  
Shown in White/Platinum Metallic  
\$466 (2/carton)



**HH1018 4-Leg Chair**  
Shown in Lava  
\$346 (4/carton)



TABLES

# HUDDLE



Huddle multi-purpose tables with rectangular tops in Harvest and Platinum Metallic frames. Nucleus® chairs with Fog mesh backs and Medium Smoke SmartLink® wall system Platinum Metallic frame with Element Veil tackboard.



Huddle multi-purpose tables with rectangular tops in Harbor Teak and Silver frames. Motivate® chairs in Centurion Poppy back and seat, with Platinum Metallic frames.



Huddle multi-purpose tables with rectangular tops in Muslin with Platinum Metallic frame. Perpetual® chairs in Inertia Mustard. Flagship® storage in Platinum and Muslin paint. SmartLink® wall system Platinum Metallic frame with Lucy Neutra tackboard.

## Today's lesson is all about change

- Stationary or mobile, these sturdy multi-purpose tables can be linked end-to-end or face-to-face for a variety of classroom layouts.
- Customize with multiple base options, top sizes, laminate finishes, and edgeband styles.
- 4-Trac or Interlink IQ Electrical power options support multiple computers in a single classroom.
- Scratch-, spill-, and stain-resistant laminate stands up to heavy use; optional nesting base folds for easy storage.



See page 10

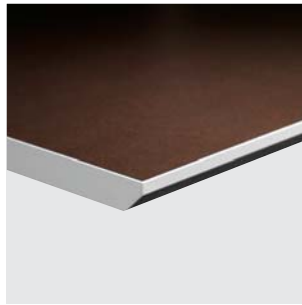
## EDGE OPTIONS



T-mold edge



2mm edgeband



Knife edge


**GO ONLINE FOR MORE HUDDLE!**  
[hon.com/huddle](http://hon.com/huddle)


## SURFACE MATERIALS

### Core Laminates



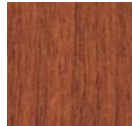
**D** Natural Maple



**C** Harvest



**H** Bourbon Cherry



**J** Henna Cherry



**F** Shaker Cherry



**Z** Columbian Walnut



**N** Mahogany

### Woodgrain Laminate

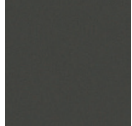


**HART** Harbor Teak

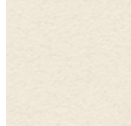
### Solid Laminates



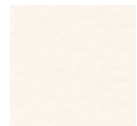
**P** Black



**S** Charcoal



**K4** Whitestone



**WHIT** Brilliant White



**SHDW** Shadow White

### Patterned Laminates



**A7** Carbon Mesh



**B9** Silver Mesh



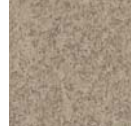
**A5** Sheer Mesh



**A9** Steel Mesh



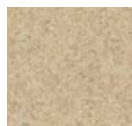
**A8** Taupe Mesh



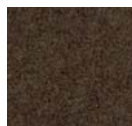
**K9** Canyon Zephyr



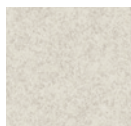
**K7** Cloud Zephyr



**K8** Desert Zephyr



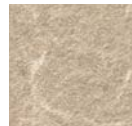
**L9** Morro Zephyr



**K1** Shadow Zephyr



**G2** Gray



**L6** Grey Tigris



**G1** White

## HUDDLE PRODUCT OVERVIEW



Nesting base allows for space-efficient storage (casters only).



Post legs are a sturdy, affordable option (glides or casters).



T-legs provide unobstructed legroom (glides or casters).

# ACTIVITY & CAFETERIA TABLES



Activity table in Bourbon Cherry with Black edge; Olson high-density stacker® in Lava. Volt® Mesh back in Crimson upholstery. 38000 Desking and Brigade® storage in Light Gray with Bourbon Cherry tops.



Trapezoid activity tables in Natural Maple and Black edge. Proficiency® chairs in Regatta with Chrome frames. Brigade® storage cabinet in Light Gray.

## Built tough for years of use

- HON activity tables have high-pressure laminate tops that withstand everything from art projects to science experiments.
- Activity tables are available in rectangular, horseshoe, round, or kidney-shaped tops, all with height-adjustable legs.
- HON cafeteria tables feature a durable laminate top with a bonded edge that resists moisture and makes cleaning easy.
- Cafeteria tables (both rectangle and round) fold in half and nest together to maximize space when not in use.



See page 10  
Activity tables only

GO ONLINE FOR MORE  
CAFETERIA TABLES!  
[hon.com/cafeteria-tables](http://hon.com/cafeteria-tables)



## ACTIVITY TABLES



**HESH6066L Horseshoe Table**  
Shown in Harvest with  
a Black edge.  
\$689 - \$704



**HESD48L Round Table**  
Shown in Harvest with  
a Black edge.  
\$348 - \$437



**HESK4872L Kidney Table**  
Shown in Harvest with  
a Black edge.  
\$643 - \$658



**HESR3072 Rectangle Table**  
Shown in Harvest with  
a Black edge.  
\$266 - \$485

## CAFETERIA TABLES



**HRS2960M Round Cafeteria Table with Stools**  
Shown in Harvest with  
a Black edge.  
\$3452



**HS293012M Rectangular  
Cafeteria Table with Stools**  
Shown in Harvest with  
a Black edge.  
\$3452



**HS293012M Rectangular  
Cafeteria Table with Stools**  
Shown in Harvest with  
a Black edge.  
\$3452



**HR293012M Rectangular Cafeteria Table**  
Shown in Harvest with  
a Black edge.  
\$1860